

Dokumentacja fotograficzna

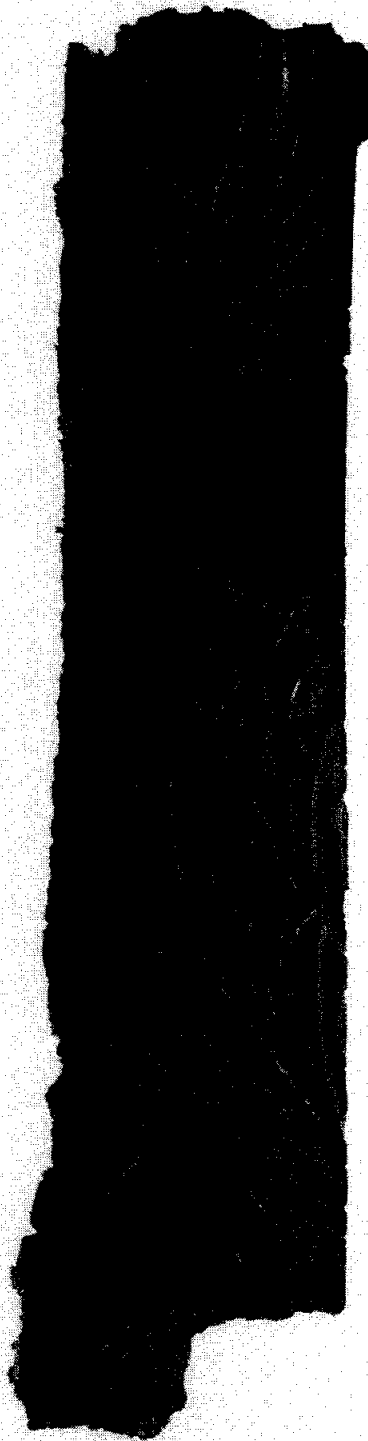
1. Szyby

2. Boazerie

3. Witraże

4. Piece

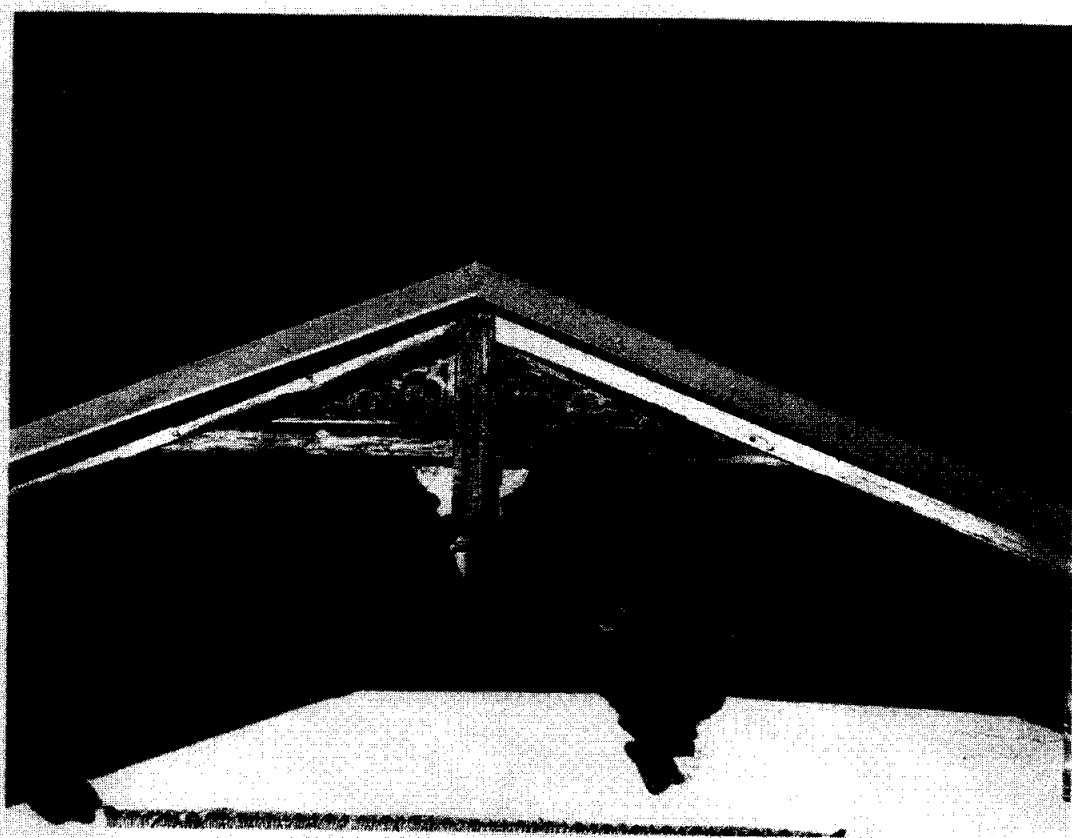
5. Sztukaterie

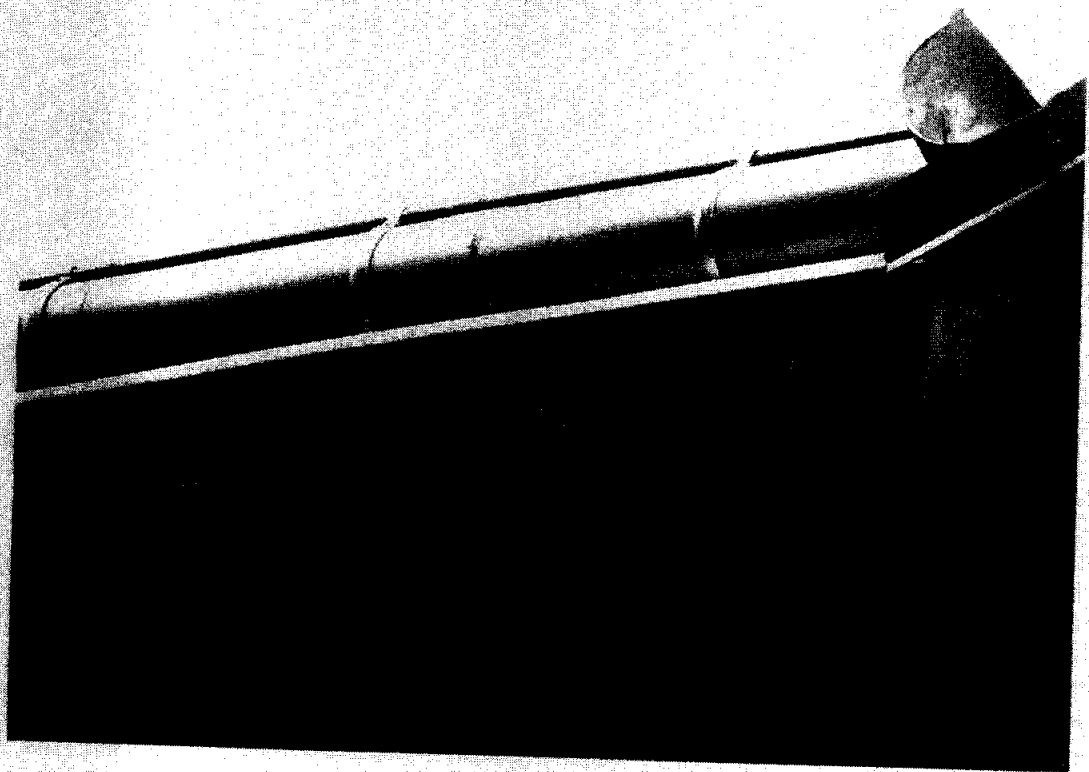
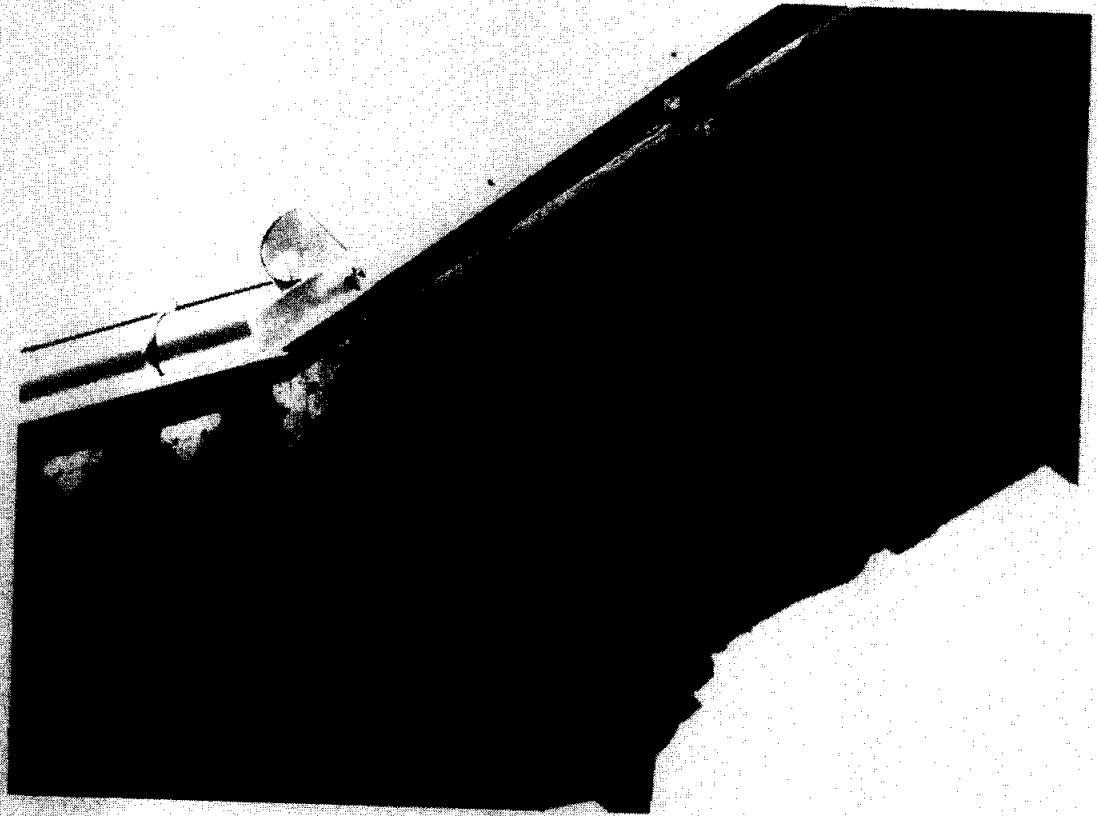


Fragment oryginalnej tapety znaleziony w wykuszu oboknia okiennego w Sali Szymanowskiego.

Do odtworzenia.

SNYCERKA

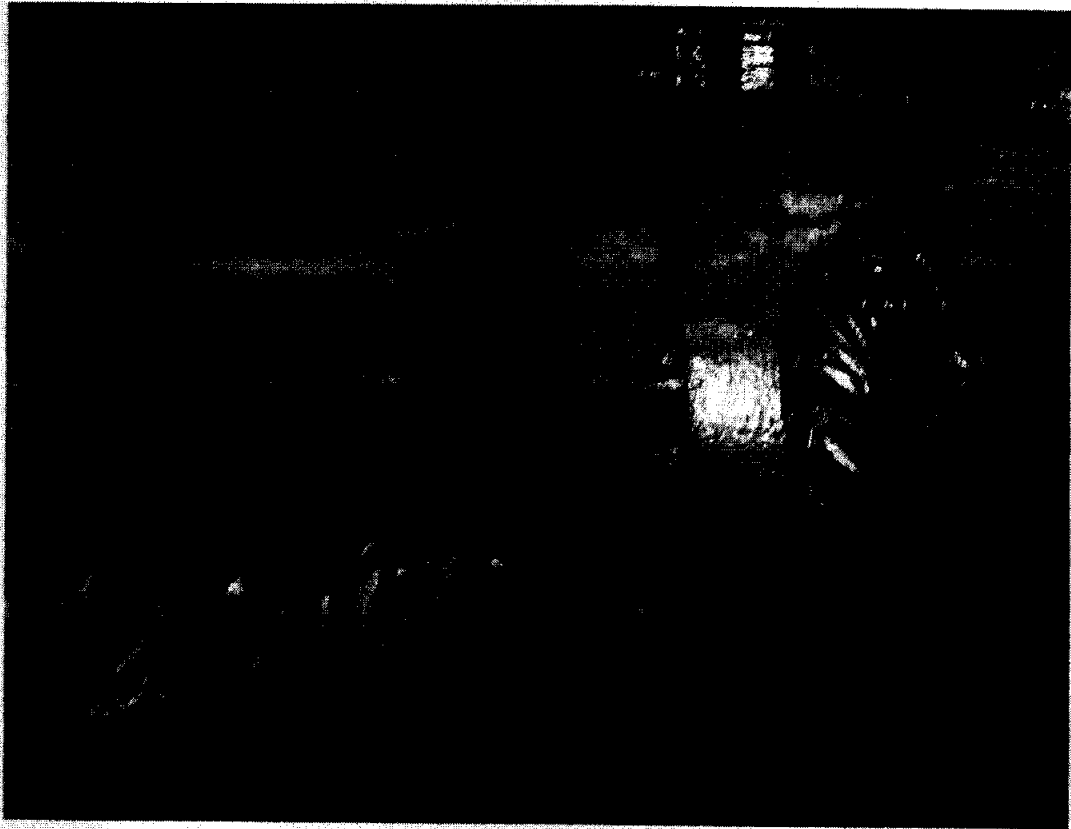


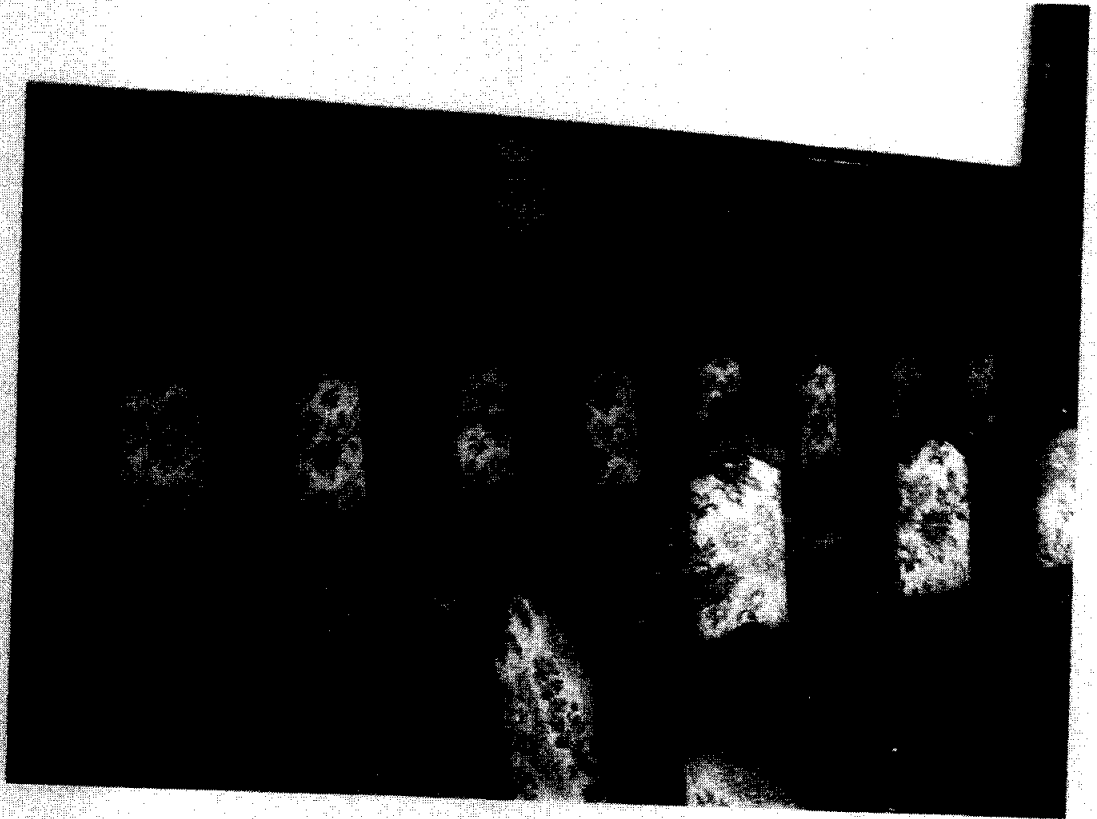


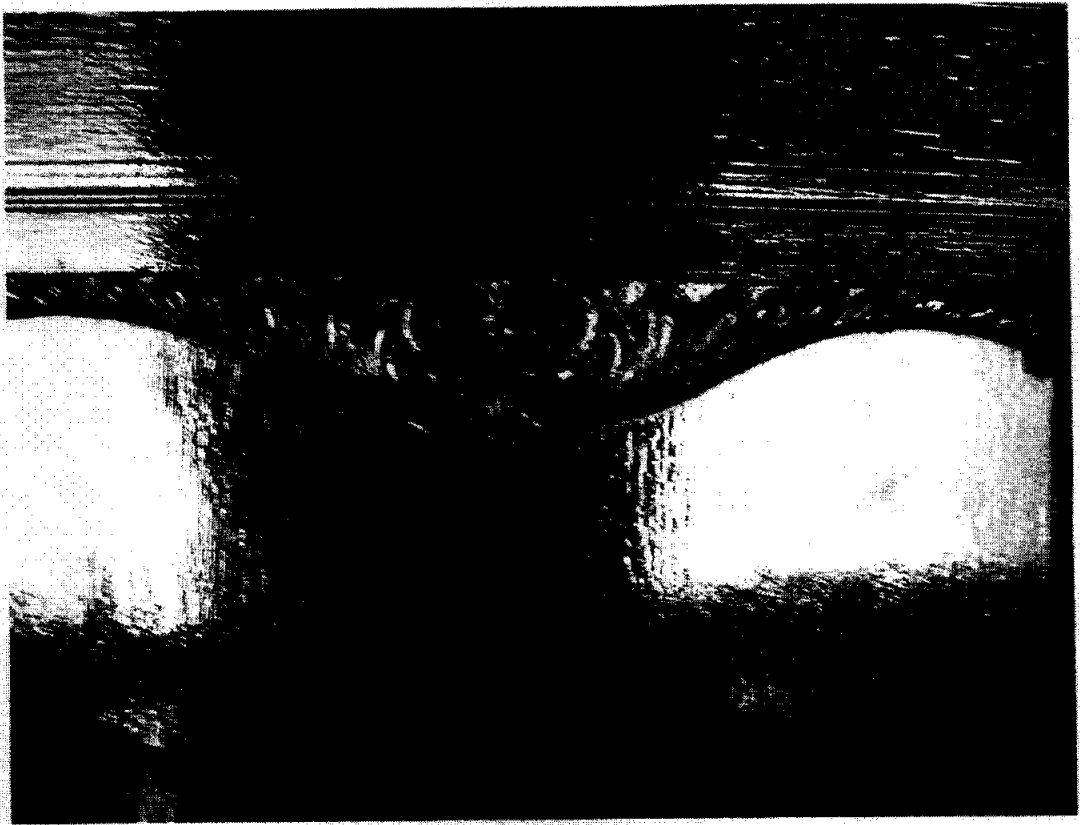


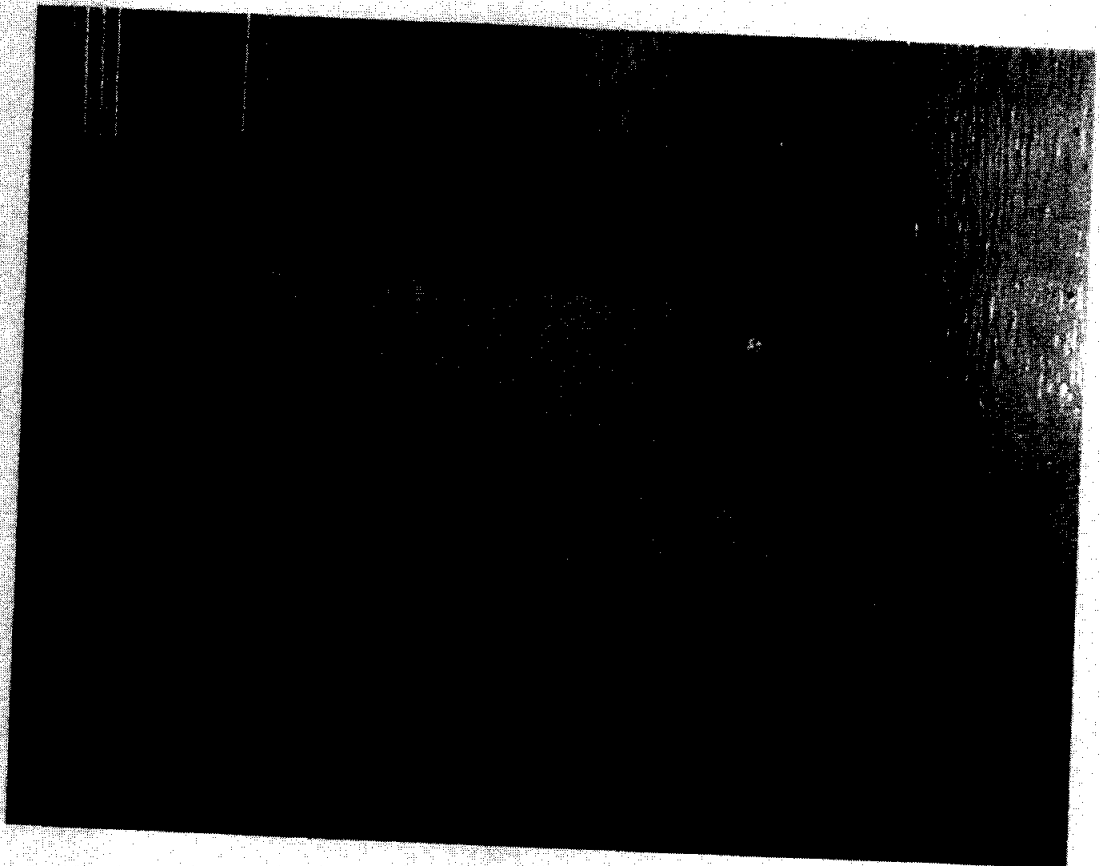


BOAZERIE

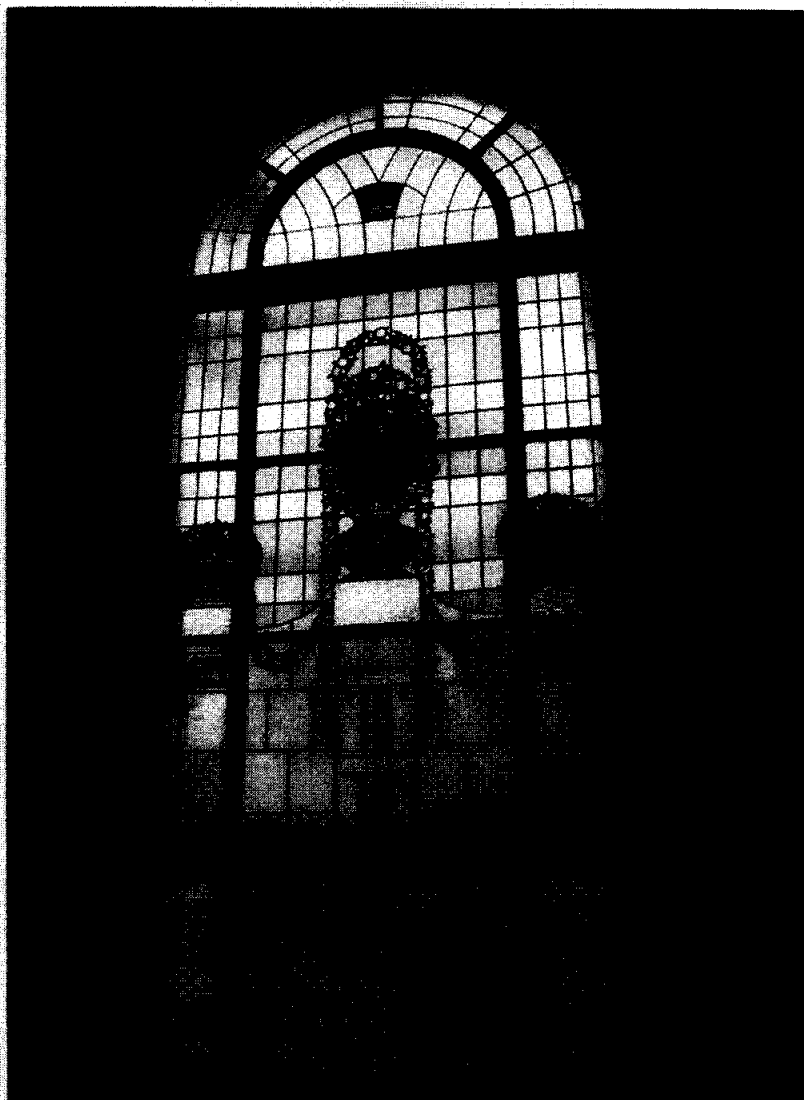




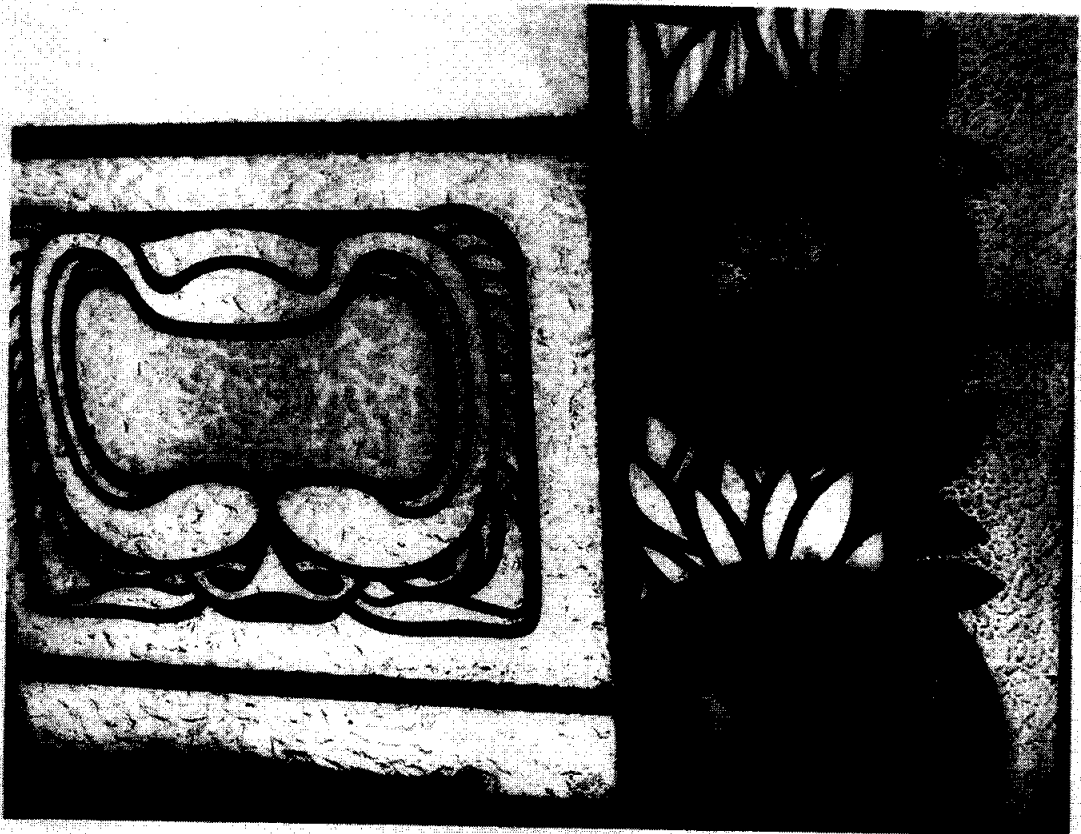
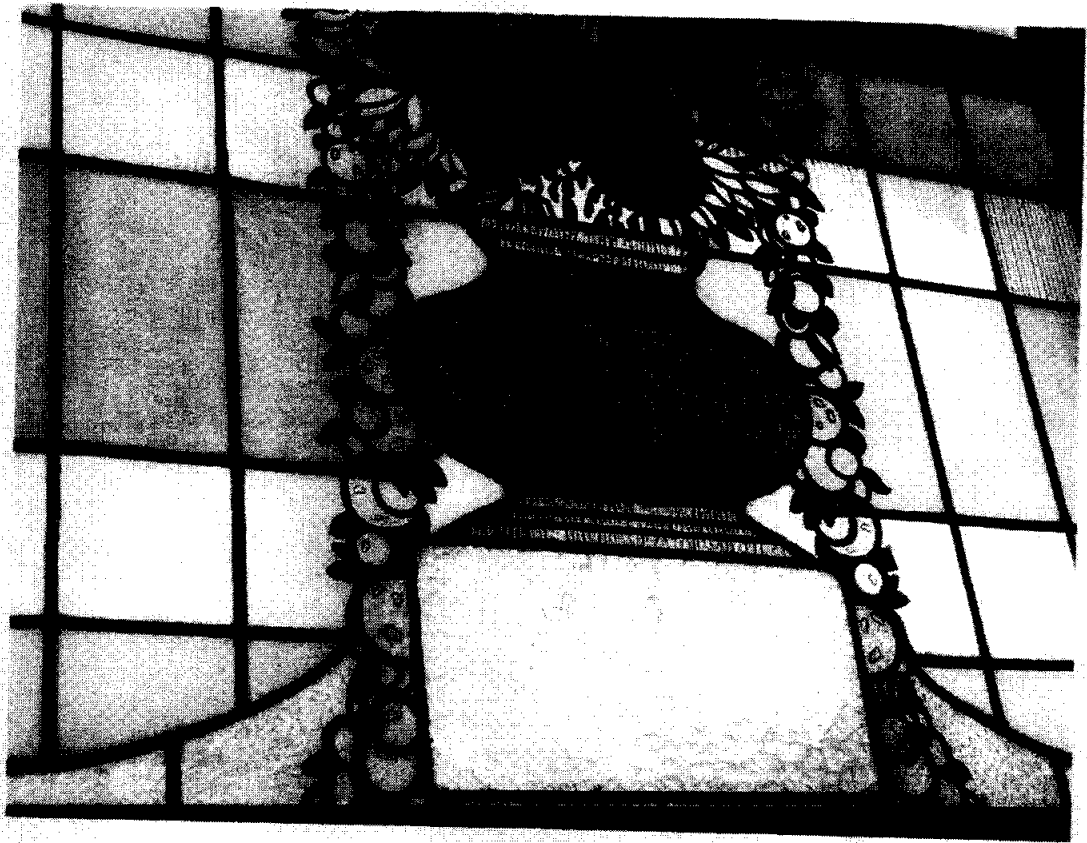


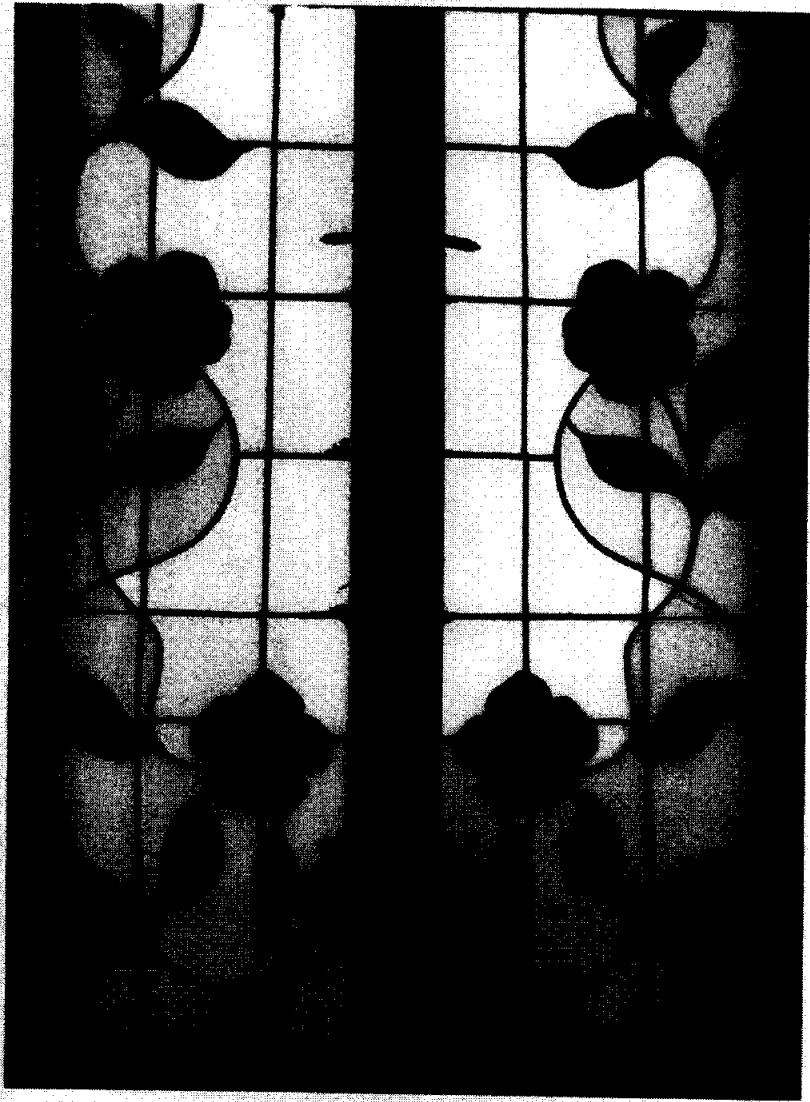


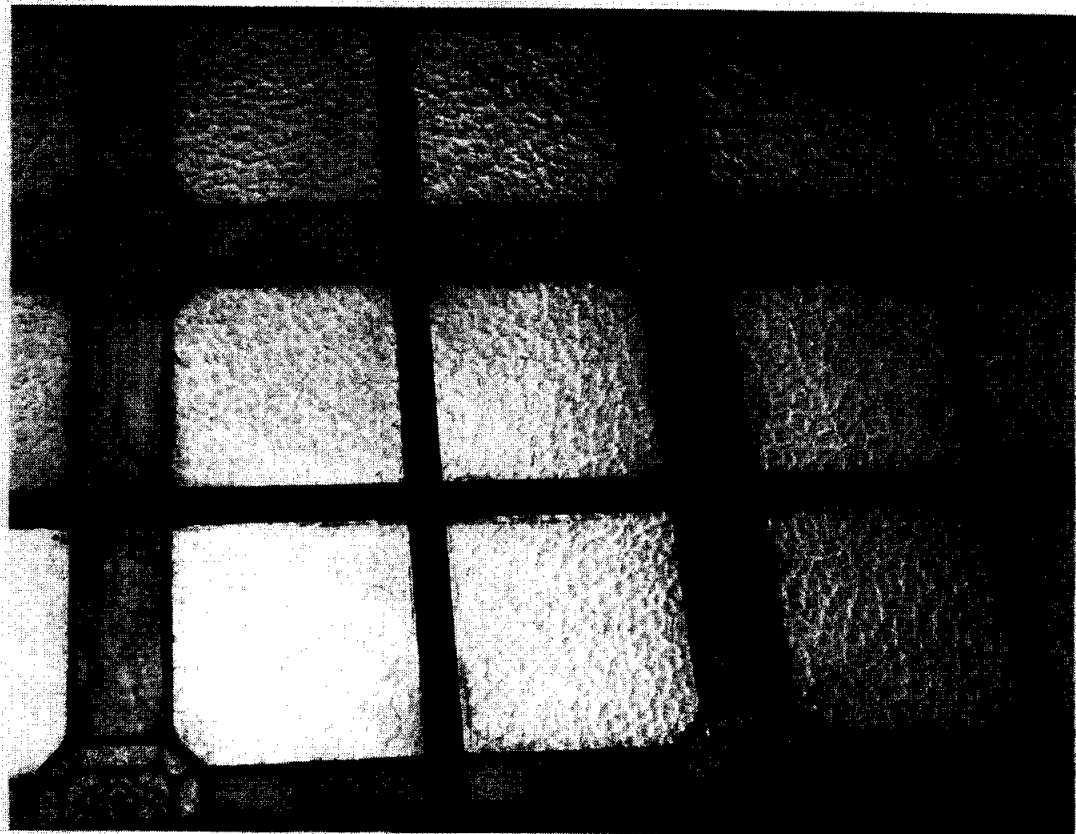
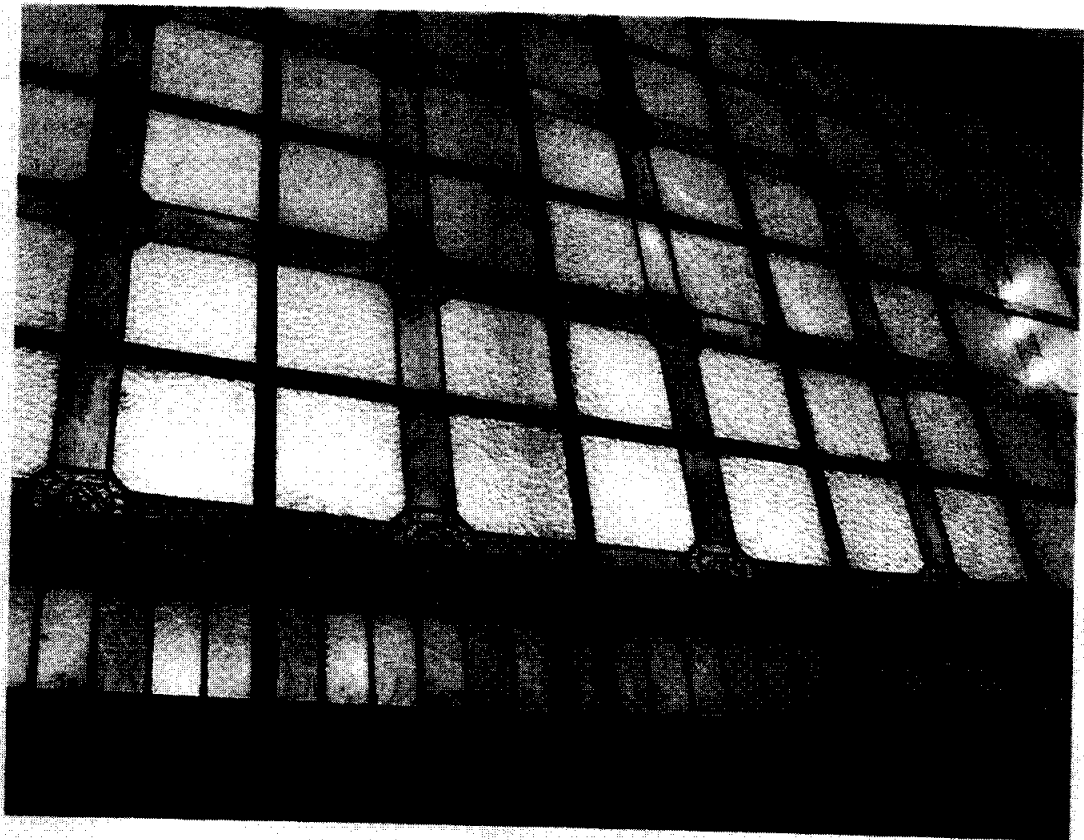
WITRAŽE

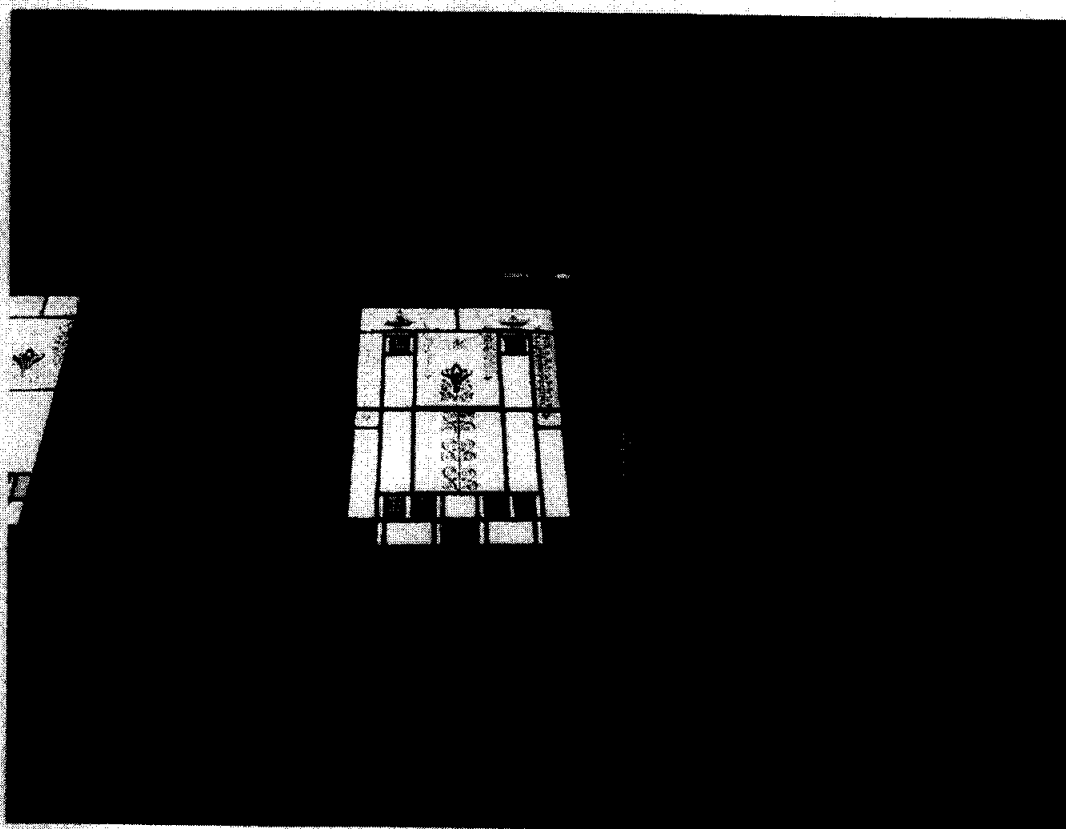










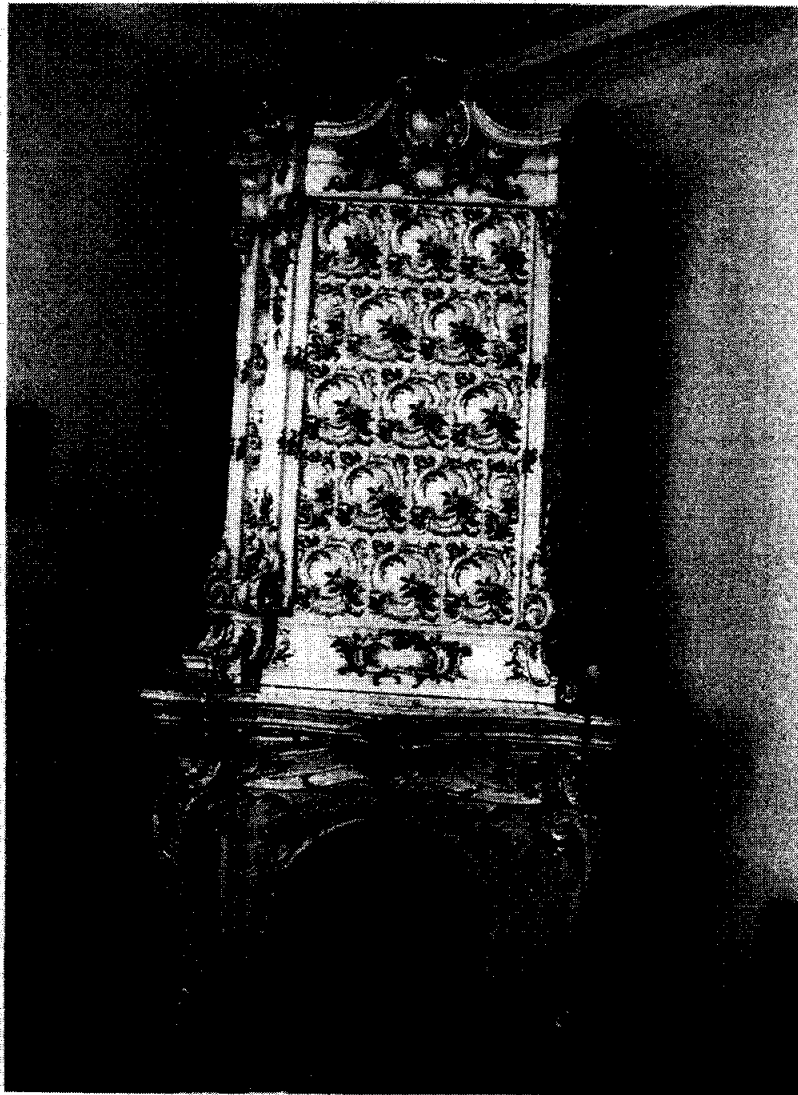


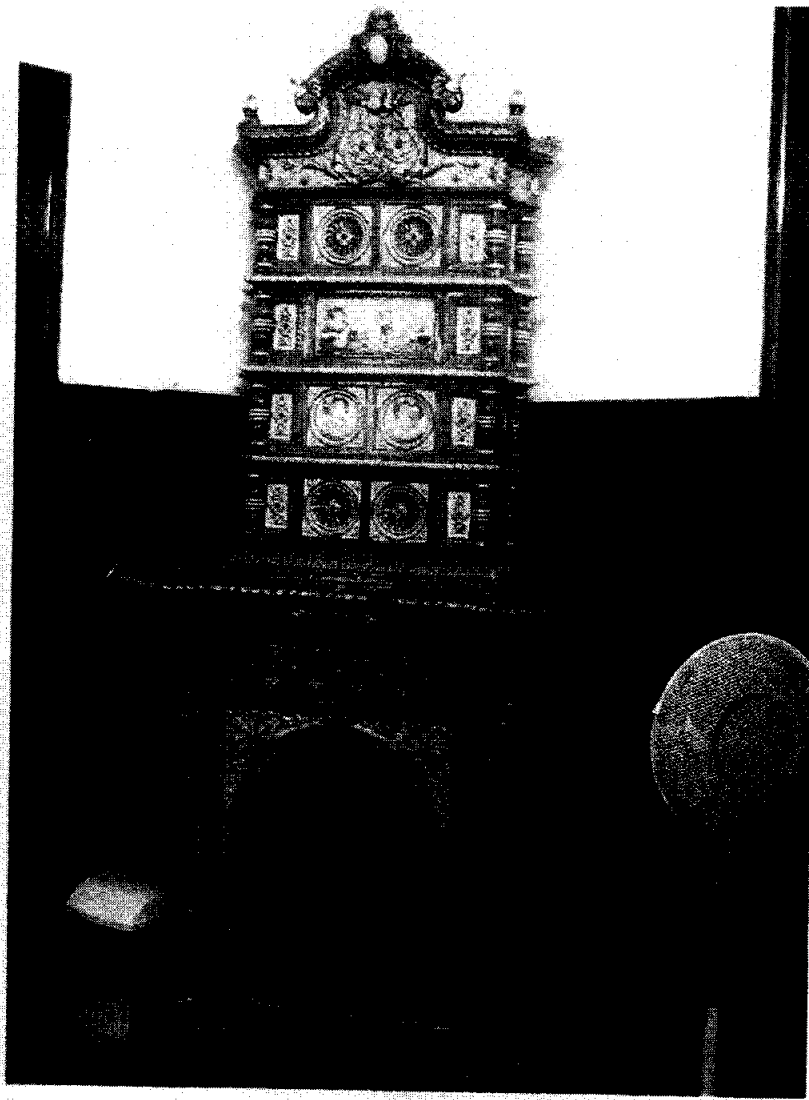


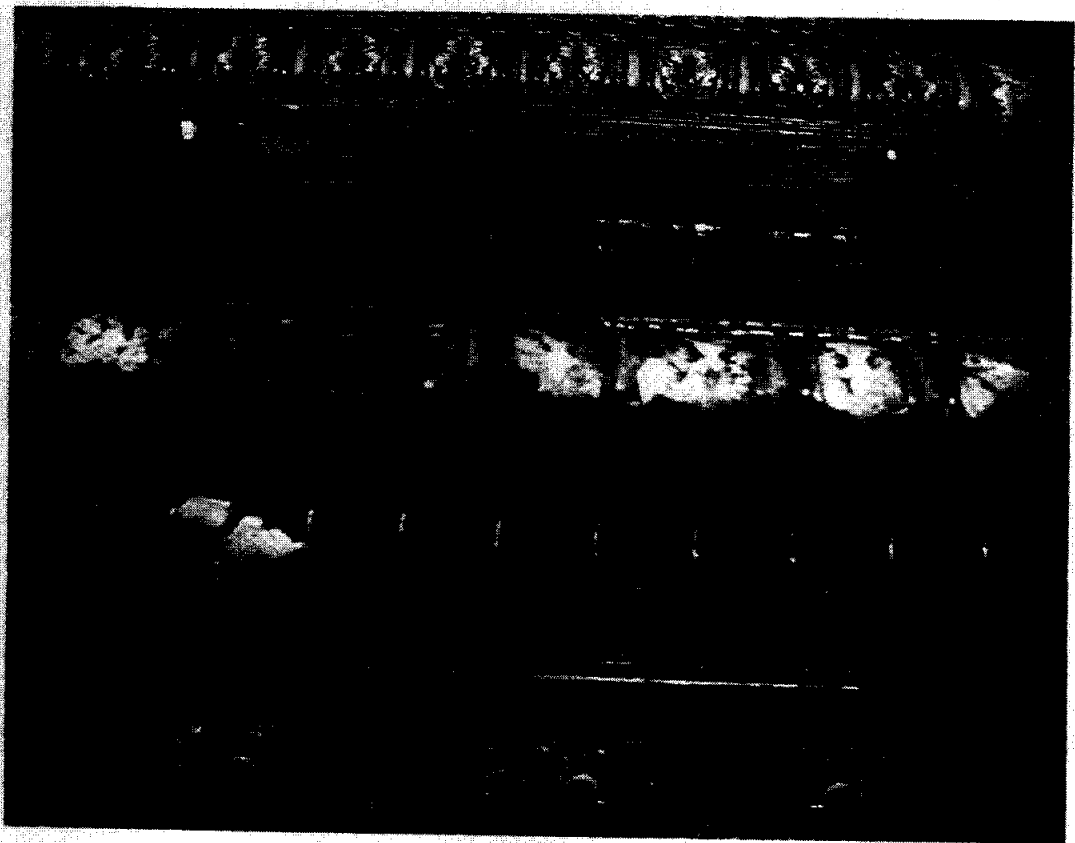
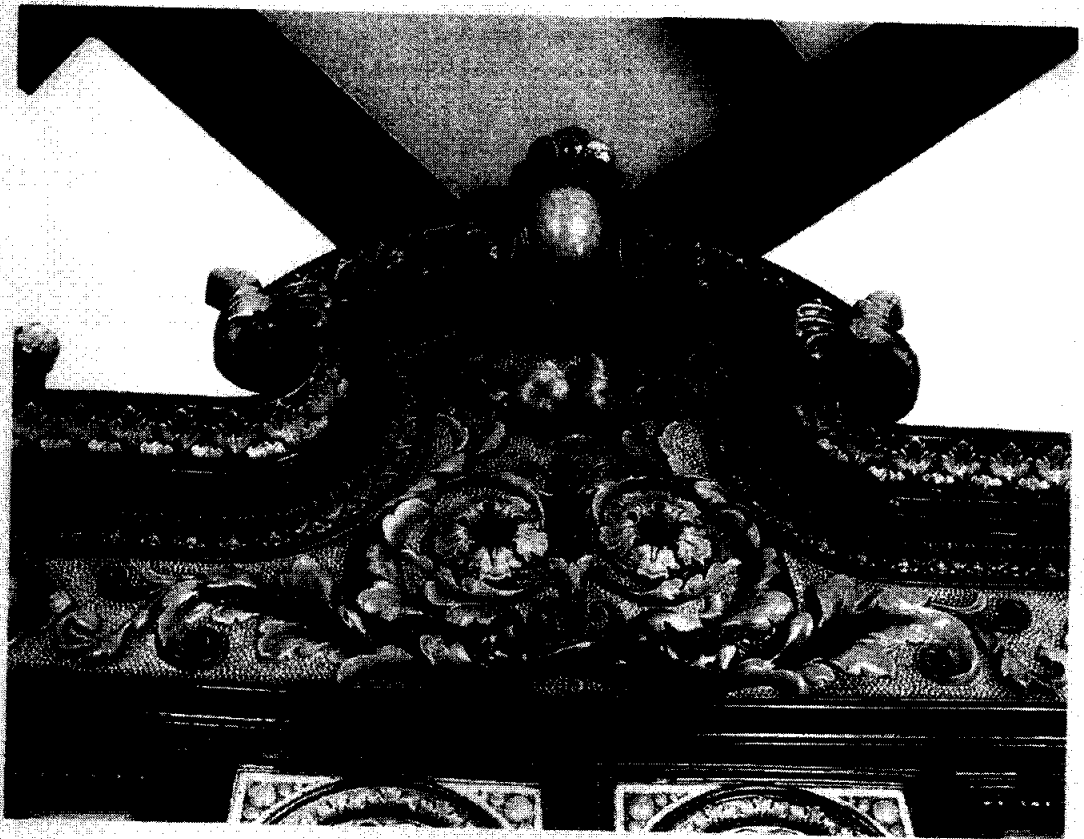


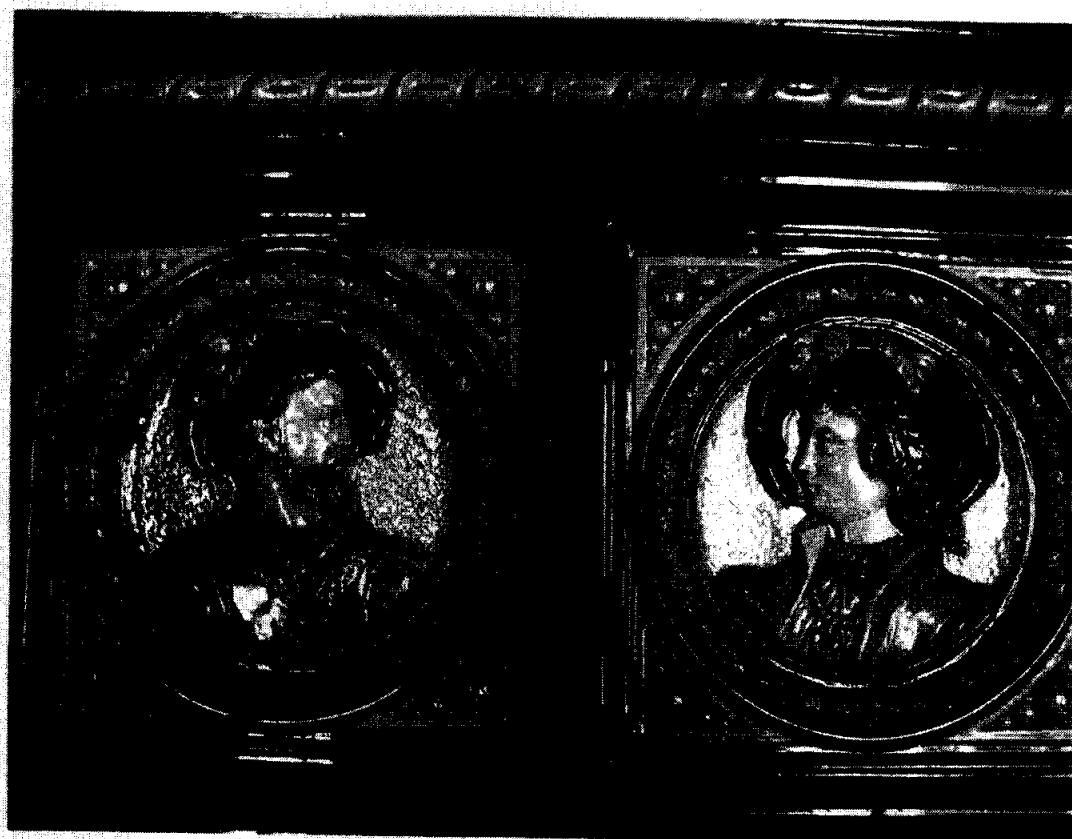


PIECE



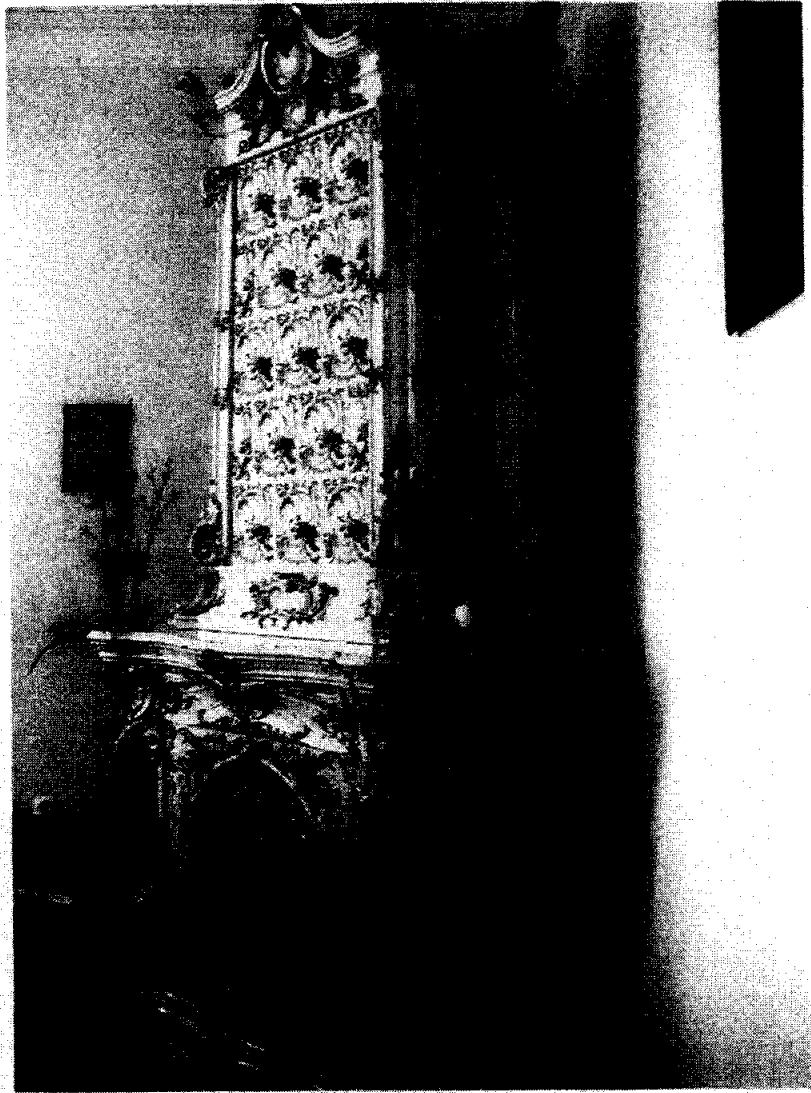


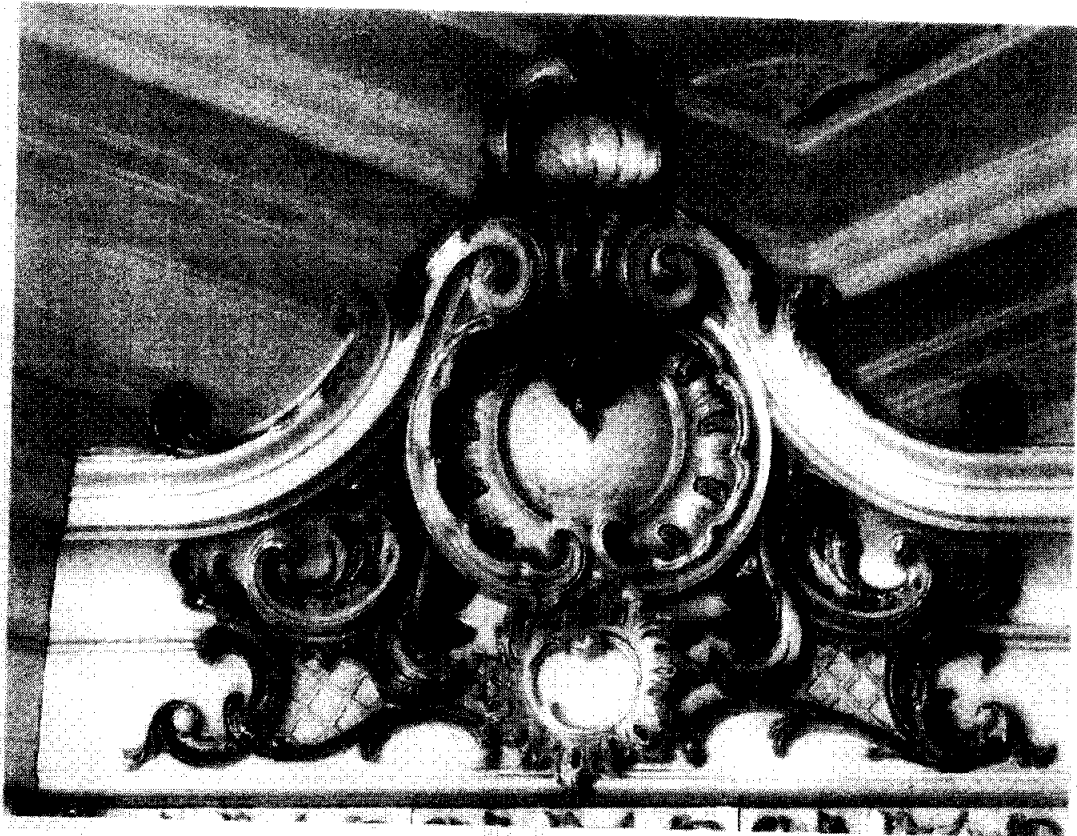




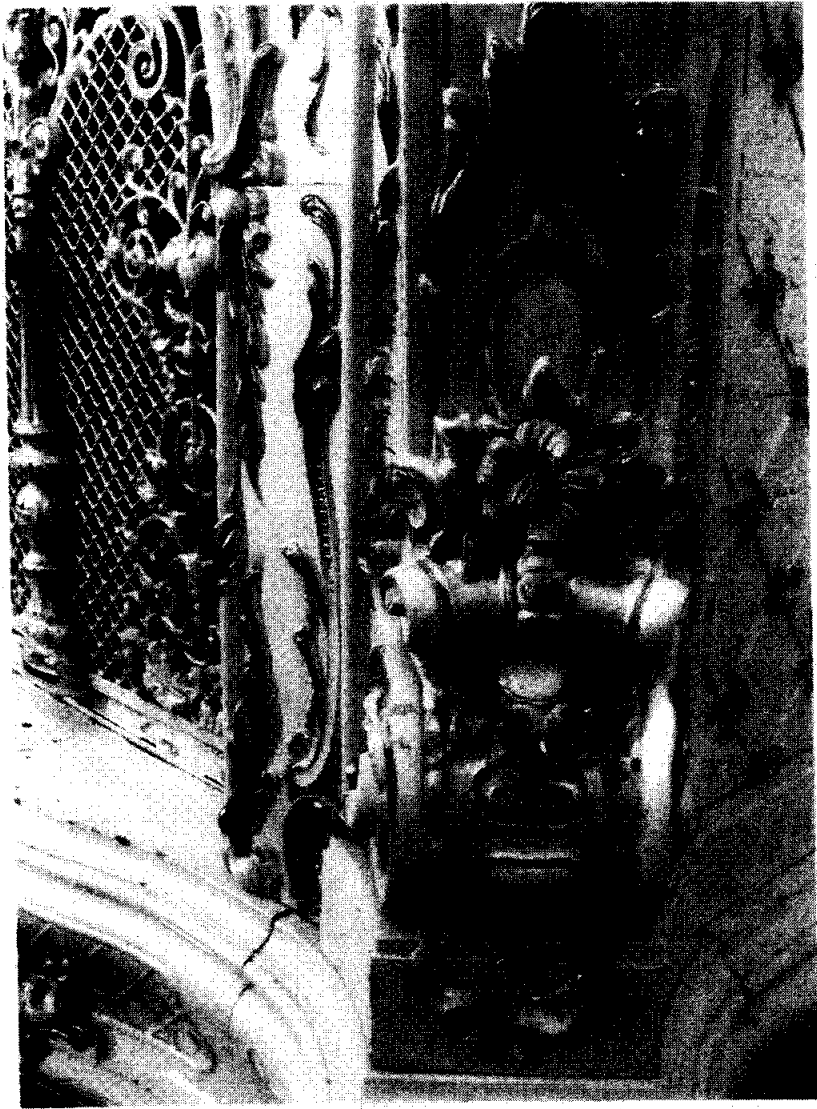
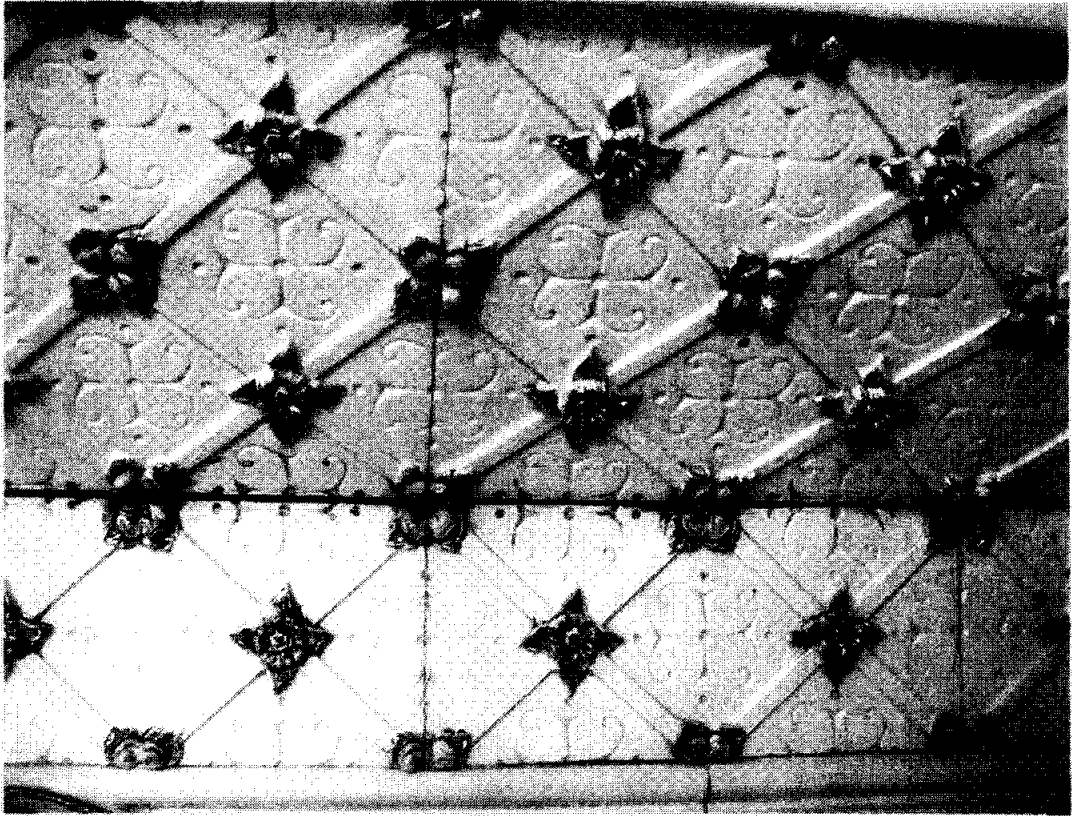














SZTUKATERIA

